

5.25" HDD Rack For 3.5" SAS/SATA Quick Install Guide

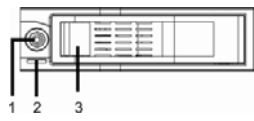
Features

- Supports 3.5" SAS/SATA HDD
- Supports HotSwap
- Supports SATA II (3.0Gb/s)
- Power & Access LED Indication
- Tool-Free HDD Installation
- Fan Cooling

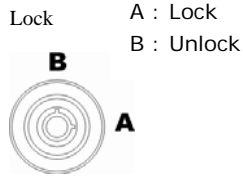
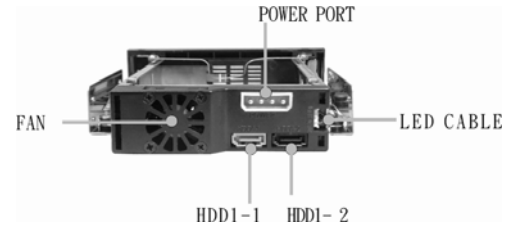
Specification

- For Windows ME/2000/XP/Vista , MAC 9.1 above
- Dimension : 190 x 148 x 42mm (L x W x H)
- Weight : 415g

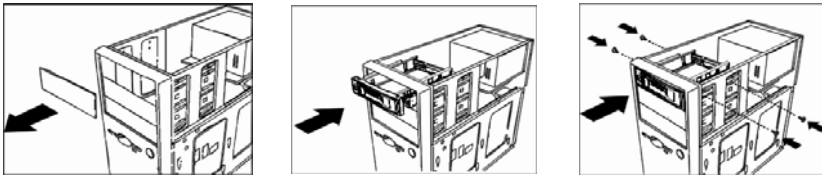
Product Over View



1. Key Lock
2. LED
3. Sprint Lock



ME-751SAS Installation

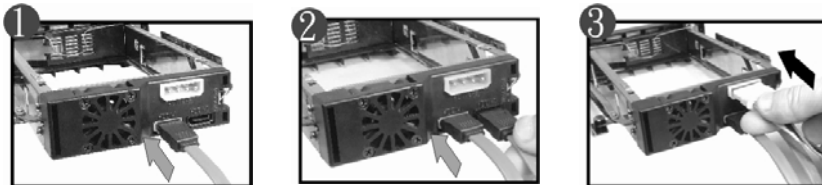


1. Remove the cover of an empty drive bay.
2. Smoothly insert ME-751SAS in the bay until the screw holes fit each other.
3. Fix screws on each side , total 4 screws to tighten the HDD rack.

Package Content

Accessories	Q'ty	Name
	1	ME-751SAS
	2	SATA data cable
	2	Key
	4	Screw
	1	QIG

ME-751SAS Cable Connection



1. Connect the SATA data cable to the HDD1-1 port and another side to the cabinet.
2. Connect another piece of SATA data cable to the HDD1-2 port and another side to the cabinet.
3. Connect the power cable of the cabinet to the power port of ME-751SAS.

How to use ME-751SAS ?



1. Unlock and open the front door
2. Position the SAS or SATA drive into the rack correctly.
3. Close the front door and make it locked for security purpose.



Do not force the door to be closed while the HDD is installed in wrong direction. Otherwise the drive or connector may be damaged.



Do not touch the HDD while it's working because the temperature of HDD may be high , please be careful.

Special Notes :

1. Do not eject HDD while it's working.
2. When taking out HDD , please hold it's edge instead of the PCB section to avoid the heat.
3. If your M/B does not support SATA II (3Gb/s), please adjust the pin tap from to , and make it under SATA I mode (1.5Gb/s)
4. When using HITACHI HDD , please be careful of the protruding FPC connector on its PCB while ejecting it out of ME-751SAS.