

1. Getting Started

Kit Contents

- USB Server
- Power Adapter
- Installation CD
- Ethernet Cable
- QIG

Minimum System Requirements

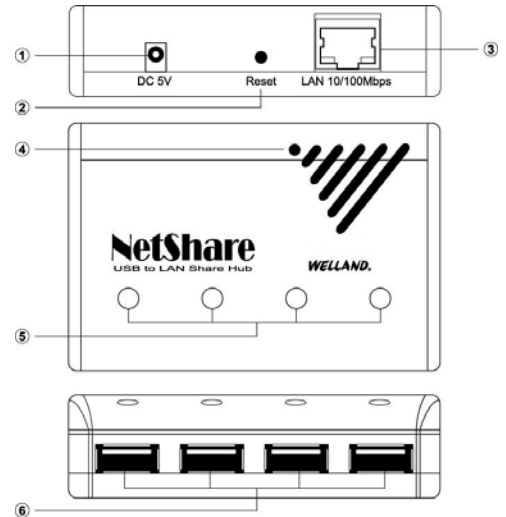
- CPU of 1.7GHz and above, Minimum 512MB RAM
- Windows 2000 / XP / VISTA / 7
- Available Ethernet port in home/office network

Note : Lower-end system may cause the operation lag and other system problems.

2. USB Server Software Installation



Insert the software CD into your computer and execute to install the USB Server software on your computer. After the finish of installation , you have to re-start your computer to enable the USB Server. (Note the software version may be updated, please use the software in the CD or the latest version you can get from the manufacturer.)



After the software installation , you will see the starting icon of USB Server on your computer like



, you can double click it to start the application program of USB Server.

Note : The USB Server Software is compatible with Windows 2000/XP/VISTA only.

Note : Support USB1.1 WebCam only , USB2.0 WebCam is not supported.

3. Connecting USB Devices

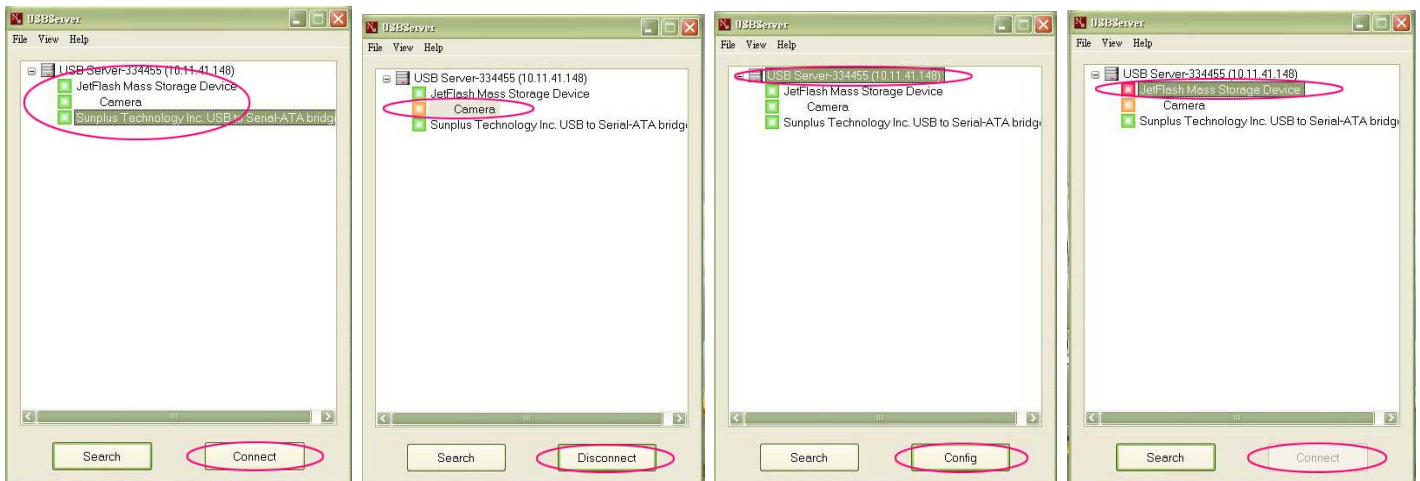
Note : Always checking if the device driver is required by some USB peripherals ... such like Printers , WebCams ... etc. Please install the device driver to your computer first.

Note : Some USB devices require a direct connection to PC for optimum performance.

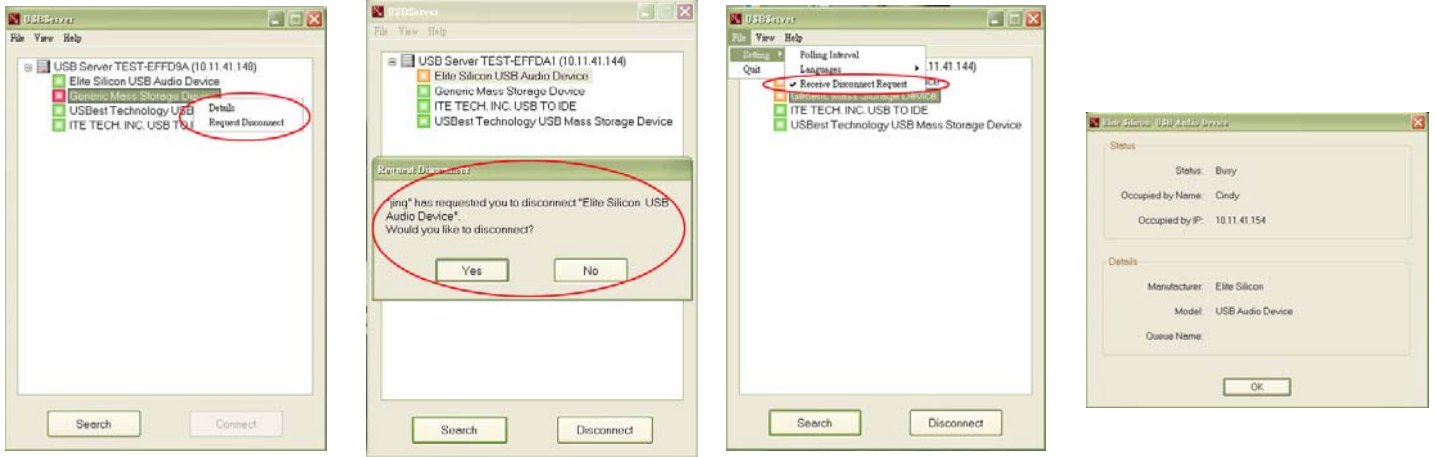
Caution : The USB server offers 5V 2A power supply which is enough for most application , but the power can be in short supply when connecting too many 2.5" External Drives (1 unit is ok) or connecting other devices with high power consumption simultaneously , please attach their self-power supply in order to co-work with USB server properly.

Now you can follow below steps to set up your USB server :

1. Make sure your network is working and the network cable is connected to USB server as well.
2. Connect the USB devices to the USB Server by USB cable.
3. Launch the USB Server application program , and starting to "Search" the USB devices connected with USB Server.
4. Click the "Connect" to mount the available USB devices. (see the 1st screenshot , the available USB devices will show the name with green icon)
5. Click the "Disconnect" to un-mount the USB devices (see the 2nd screenshot , the connected USB device is the orange icon)
6. The Web Utility is accessible by clicking "Config" (see the 3rd screenshot)
7. When the USB device was in use by another user , it can't be mounted (see the 4th screenshot , the red icon shows the device is in use.)

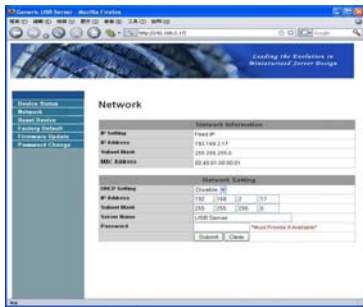


8. When the USB device is in use , you can send a **“Request Disconnect”** message to that master user to disconnect and free the device. (See below the 1st screenshot , click **“Request Disconnect”** to send a message to the user who mounts the device.)
9. After point 8 , the master user will see a message from the user who wants to mount the device which is in use. (See below the 2nd screenshot)
10. You can enable or disable **“Receive Disconnect Request”**. (See below the 3rd screenshot)
11. You can check who is using any mounted device by clicking **“Details”**. (See below the 1st and 4th screenshot)



4. Web Configuration

The web utility is accessible by clicking **“Config”** (see above 3rd screenshot) , a web GUI will be popped up as below.



Note : A server with busy device(s) connected is prohibited to be configured to prevent interruption of any on-going tasks.

Note : Using **“Reset”** of Web Utility will not clean up the former settings.

For more setting information , please check the user manual stored in the CD.

5. USB Server Icon Definition

	(orange icon)	USB device has been established and is now mounted by user.
	(orange icon with !)	Error with USB device. Problem : out of paper
	(green icon with !)	The device is not connected but has some type of problem such as out of ink or out of paper
	(green icon)	USB device is available and ready to be mounted
	(red icon)	USB device is in use by another user
	(red icon with !)	Problem with a USB device occupied by another user
	(red X)	Unsupported USB device
	(blue icon)	USB server is on a different network segment or is not recognized. USB device can not be connected.

6. Remarks

1. The detailed installation manual can be found in the "User Manual" of the CD.
2. The product is compliant with CE/FCC/UL/RoHS/WEEE.