

1. Getting Started

Kit Contents

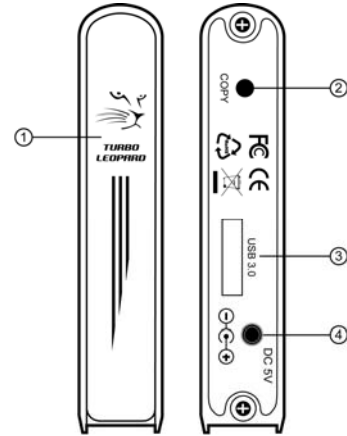
- 2.5" TURBO LEOPARD Enclosure
- USB3.0 Y Cable
- Installation CD
- Screws
- Carry Bag
- QIG

Minimum System Requirements

- Available USB3.0 Host port of your PC
- Windows XP / VISTA / 7

Product Overview

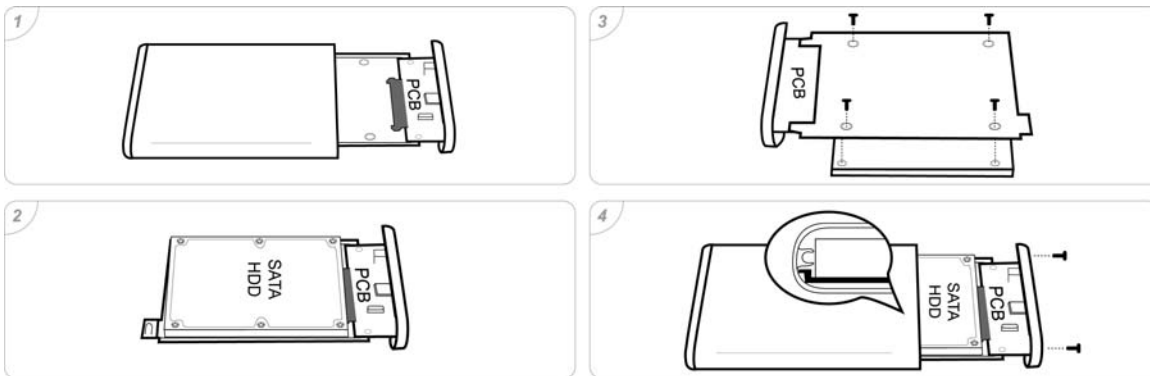
1. Power/Access LED
(TURBO LEOPARD Image)
2. One Touch Backup Button
3. USB3.0 Connector (micro type)
4. Power Socket



2. Assembling the 2.5" SATA HDD

Note : *The internal space of this enclosure fits with 7.5~12.5mm , please mount the drive on the tray properly.*

- Step 1. Pull out the PCB tray from aluminum caddy gently.
- Step 2. Connect the SATA drive to the SATA connector of PCB. (connector to connector)
- Step 3. Put the screws in from the rear side of the tray.
- Step 4. Position the PCB tray with drive into the aluminum caddy through the track carefully, then put the screws in and tighten them.



3. Connecting the Drive

1. Connect the A type plug of USB3.0 Cable to your computer.
2. Connect the micro type plug of USB3.0 to the USB3.0 port on the rear of the enclosure.
3. The power indication LED (on the front panel) will blink and the presence of an external drive will be visible on your system tray.

4. Installing Backup Software

Note : *Backup Software only supports Windows XP / VISTA / 7 32bit system.*

1. Put Installation CD-ROM into the Optical Drive on your computer or laptop.
2. Select the correct Backup software version and then follow the installation procedures.
3. Once OTB is successfully installed in the computer or laptop, an OTB icon and manual will appear in the startup menu of your system.

5. Disconnecting the Drive

Caution : *To prevent data loss, always be sure to stop all active applications before shutting down the drive.*

Windows

1. Double-click the Safely Remove Hardware icon in your system tray (typically located on the bottom right corner of your desktop).
2. Select the appropriate device from the list and click "Stop". Click "OK" to confirm your selection of the drive to be disconnected.
3. Click "Close" and ensure that the drive is powered off already.

6. Remarks

1. The detailed installation manual can be found in the "User Manual" of the CD.
2. The product is compliant with CE/FCC/UL/RoHS/WEEE.