

1. Getting Started

Kit Contents

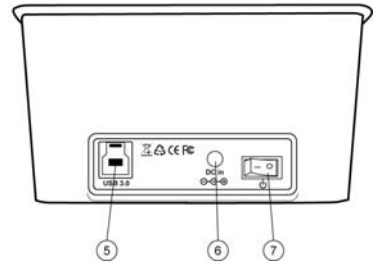
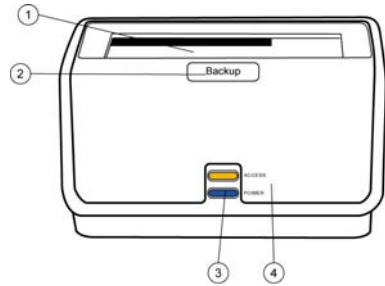
- SATA Drive Docking
- USB3.0 Cable
- Power Adapter
- Installation CD
- QIG

Minimum System Requirements

- Available USB3.0 Host port
- Windows XP / VISTA / 7

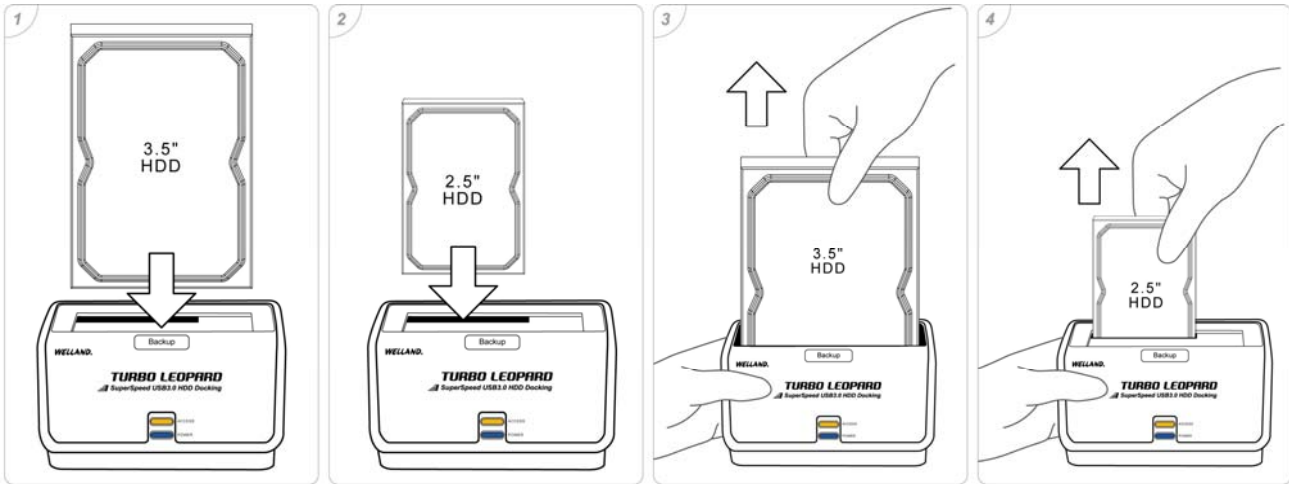
Product Overview

1. Cover
2. OTB Button
3. Power LED
4. Access LED
5. USB3.0 Port
6. DC Jack
7. Power Switch



2. Assembling the SATA HDD into the Docking

1. The docking supports 2.5" or 3.5" SATA HDD directly plug in to the SATA connector, which is instructed by below photo 1 and 2.
2. You can easily hot-swap the HDD by directly pulling it out from the docking, which is instructed by below photo 3 and 4.



3. Connecting the Drive

1. Connect one end (USB3.0 A Type) of the USB3.0 Cable to your computer.
2. Connect the other end (USB3.0 B Type) of the USB3.0 Cable to the USB port on the back of the device.
3. Connect the power adapter to the power socket of the docking and switch the power on.
4. The "Power" LED will illuminate and the presence of an external drive will be visible on your PC monitor or laptop.

4. Installing OTB Software

Note : OTB supports Windows 32bit system only.

Note : Please press OTB button for 2 seconds at least to make the copy function work well.

1. Put Installation CD-ROM into the Optical Drive on your computer or laptop.
2. Select the correct OTB software version and then follow the installation procedures.
3. Once OTB is successfully installed on the computer or laptop, an OTB icon will appear on the system tray of your computer.

5. Disconnecting the Drive

Caution : To prevent data loss, always be sure to close all active applications before shutting down the drive.

Windows

1. Double-click the Safely Remove Hardware icon in your system tray (typically located on the bottom right corner of your desktop).
2. Select the appropriate device from the list and click "Stop". Click "OK" to confirm your selection of the drive to be disconnected.
3. Click "Close" and ensure that the drive is powered off already.

6. Remarks

1. The detailed installation manual can be found in the "User Manual" of the CD.
2. The product is compliant with CE/FCC/UL/RoHS/WEEE.